

LEGEND FOR FINAL MECHANICAL & ELECTRICAL CONNECTIONS

- 1/2" HOT & COLD WATER SUPPLY ~6" A.F.F.
- 1 1/2" DRAIN ~12" A.F.F.
- POWER SUPPLY 15A/208V/3Ø/60Hz (ACTUAL LOAD 9.23A) ~60" A.F.F.

NOTES:

1. ALL ROUGH-INS TO STUB UP & CAP OFF NO HIGHER THAN 4" A.F.F.
2. FINAL MECHANICAL CONNECTIONS TO DRAINS AND WATER SUPPLIES BY OTHERS.
3. FINAL ELECTRICAL CONNECTION TO MAIN CONTROL CENTRE BY OTHERS
4. RECIRCULATING WATER LINE MOUNTED UNDER SOILED DISHTABLE TO PULPER BY OTHERS
5. FIELD WIRING OF CONVEYORS TO MAIN CONTROL CENTRE BY AEROWERKS @ TIME OF INSTALLATION
6. CUSTOMER TO PROVIDE SIZES OF ALL TRAYS TO BE USED ON THIS SYSTEM



0 1 2 3 4 5
SCALE IN FT.

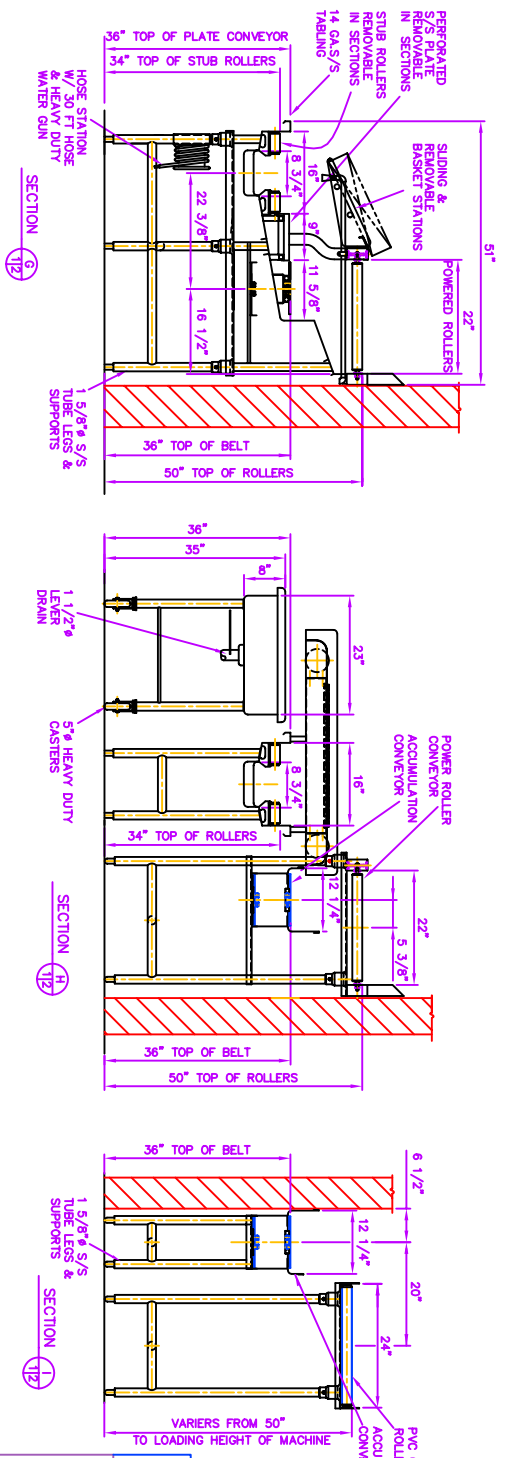
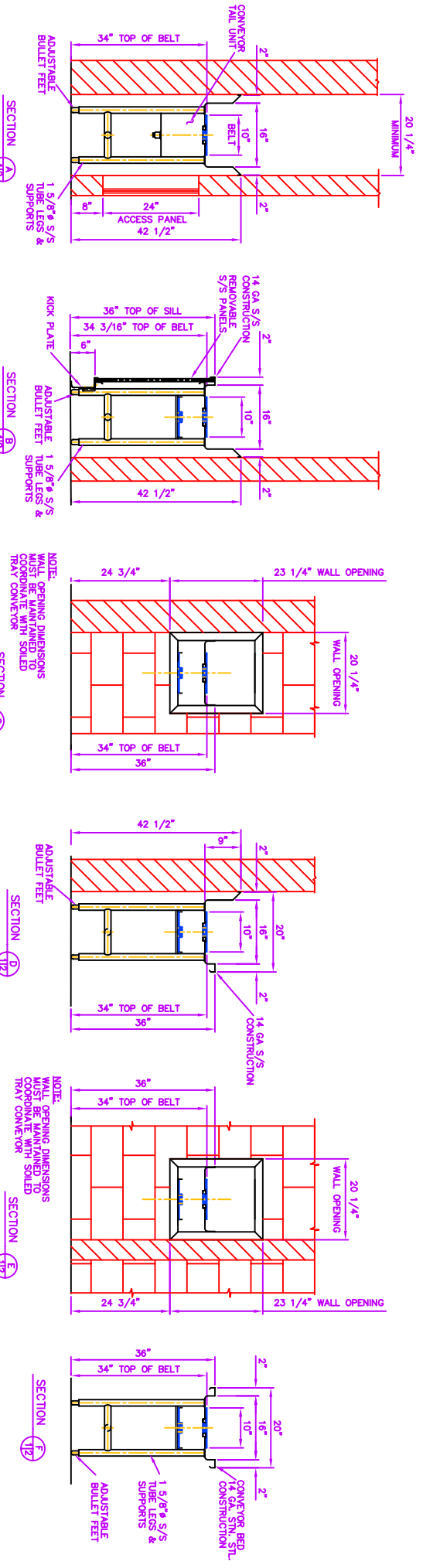
ALL IDEAS, DESIGNS, PLANS AND ARRANGEMENTS INDICATED BY THIS DRAWING ARE OWNED BY AND ARE THE PROPERTY OF AEROWERKS SYSTEMS AND WERE CREATED AND DEVELOPED FOR USE ON AND IN CONNECTION WITH THE SPECIFIED PROJECT. NONE OF SUCH IDEAS, DESIGNS, PLANS OR ARRANGEMENTS SHALL BE USED BY OR DISCLOSED TO ANY PERSON, CORPORATION OR FIRM FOR ANY PURPOSE WHATSOEVER WITHOUT THE WRITTEN PERMISSION OF AEROWERKS.

REVISION	DATE	DESCRIPTION	BY
1	MAR. 30, 00	TRAY DROP AREA REVISED	G.K.

AEROWERKS

1150 Eighth Line, Unit 16, Oakville, Ontario L6H 2R4
Tel: (905) 844-9449 Fax: (905) 844-0042

CUSTOMER:	GARDNER & BENOIT, INC.		
JOB NAME:	DAVIDSON COLLEGE, RALEIGH, NC		
TITLE:	SOILED TRAY HANDLING SYSTEM PLAN VIEW		
DATE:	FEBRUARY 28, 2000	JOB NO:	J006360
SCALE:	1/2" = 1'-0"	DRAWING NO:	01
DRAWN BY:	G. KRUPETSKY		
CHECKED BY:			

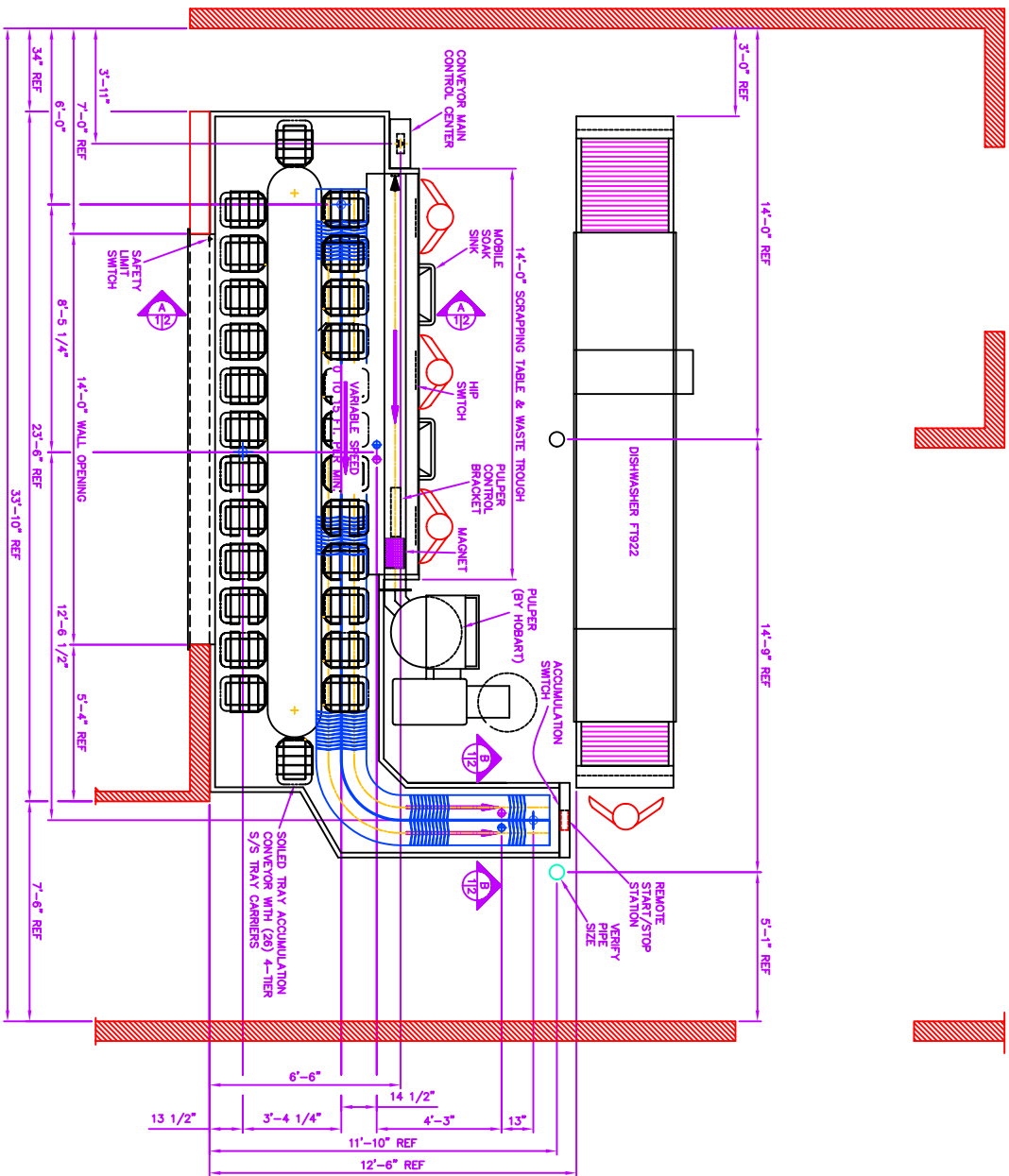


SCALE IN FT.
 0 1 2

CUSTOMER: GARDNER & BELLOIT, INC.
JOB NAME: DAVIDSON COLLEGE, RALEIGH, NC
TITLE: SOLED TRAY HANDLING SYSTEM
CROSS SECTIONS:
DATE: FEBRUARY 28, 2000
SCALE: 1" = 12"
DRAWN BY: G. KRUPETSKY
CHECKED BY:
JOB NO.: J006360
DRAWING NO.: 02

**1150 Eighth Line, Unit 18, Oakville, Ontario L6H 2R4
 Tel: (905) 844-9449 Fax: (905) 844-0042**





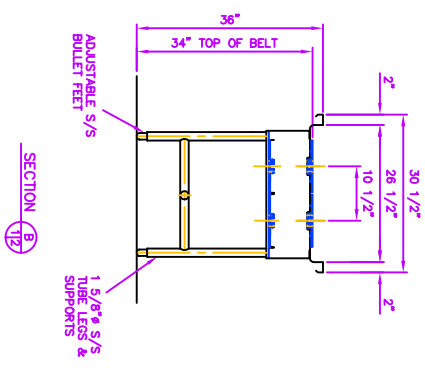
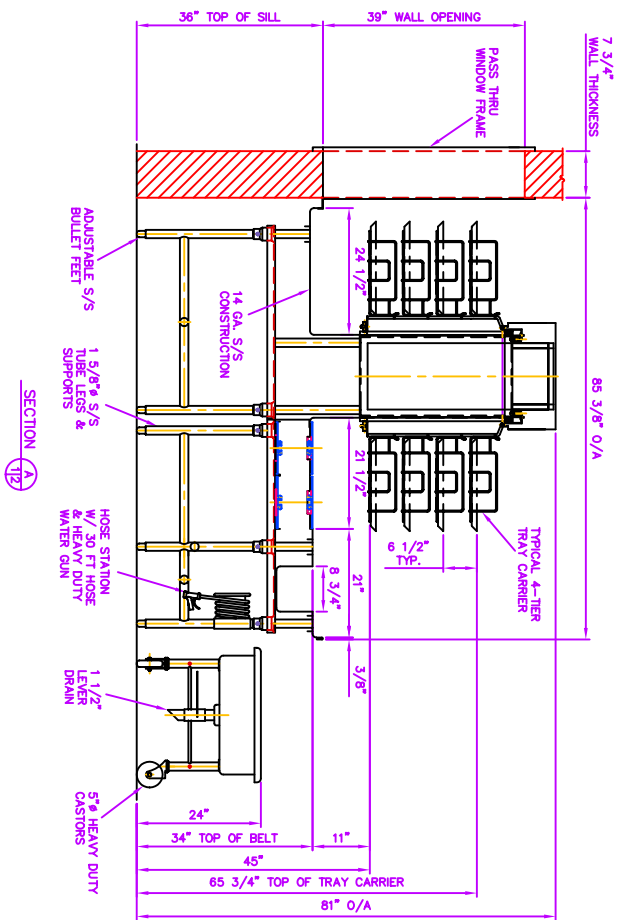
LEGEND FOR FINAL MECHANICAL & ELECTRICAL CONNECTIONS

- 1/2" HOT & COLD WATER SUPPLY ~6" A.F.F.
- 1 1/2" DRAIN ~12" A.F.F.
- POWER SUPPLY 15A/208V/1ϕ/60Hz (FULL LOAD 75A) ~60" A.F.F.

- NOTES:**
1. ALL ROUGH-INS TO STUB UP & CAP OFF.
 2. ALL MECHANICAL CONNECTIONS TO DRAINS AND WATER SUPPLIES BY OTHERS.
 3. FINAL ELECTRICAL CONNECTION TO MAIN CONTROL CENTER BY OTHERS.
 4. RECIRCULATING WATER LINE MOUNTED UNDER SOILED DISHABLE TO PULPER BY OTHERS.
 5. FIELD WIRING OF CONVEYORS TO MAIN CONTROL CENTER BY AEROWERKS @ TIME OF INSTALLATION.
 6. CUSTOMER TO PROVIDE SIZES OF ALL TRAYS TO BE USED ON THIS SYSTEM.

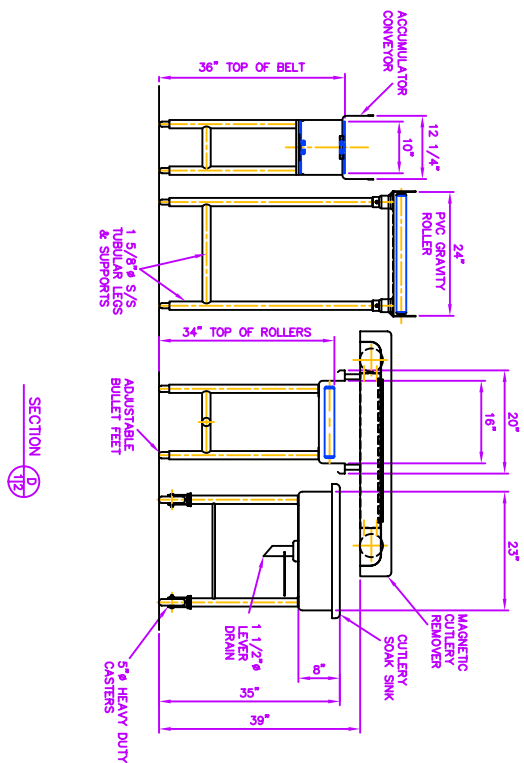
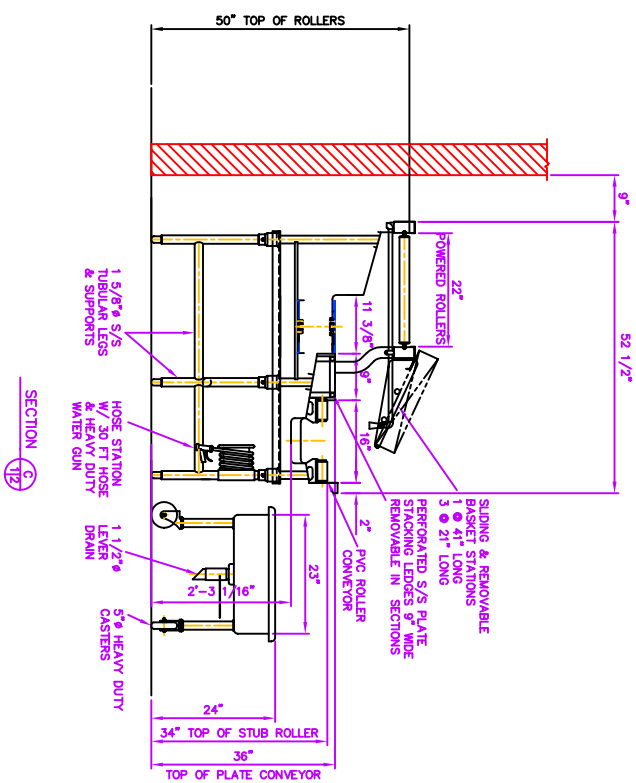
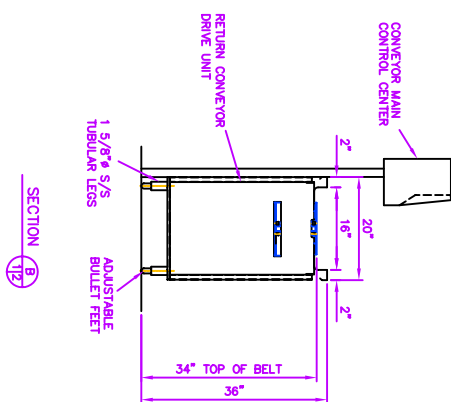
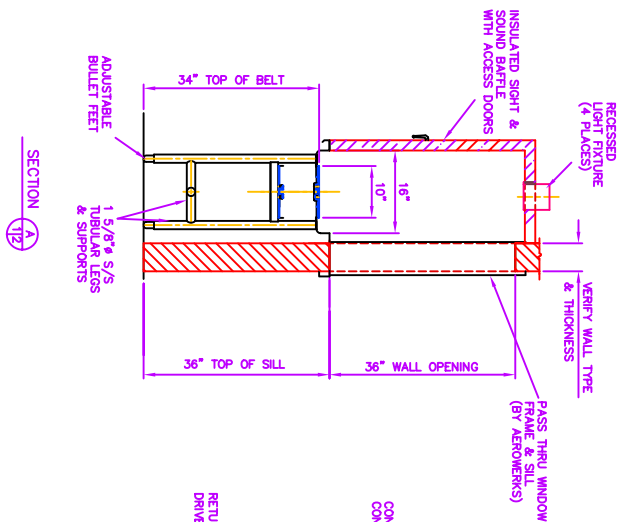



0 1 2 3 4 5 SCALE IN FT.	
AEROWERKS 1150 Eighth Line, Unit 16, Oakville, Ontario L6H 2R4 Tel: (905) 844-9449 Fax: (905) 844-0042	
CUSTOMER:	PURCHASE ORDER NO:
JOB NAME: BYU - HAWAII	
TITLE: SOILED TRAY HANDLING SYSTEM	
DATE: APR 10, 2002	JOB NO: J017116
SCALE: 1/2" = 1'-0"	DRAWING NO:
DRAWN BY: A. CHECH	CHECKED BY:
PERMISSION OF AEROWERKS.	



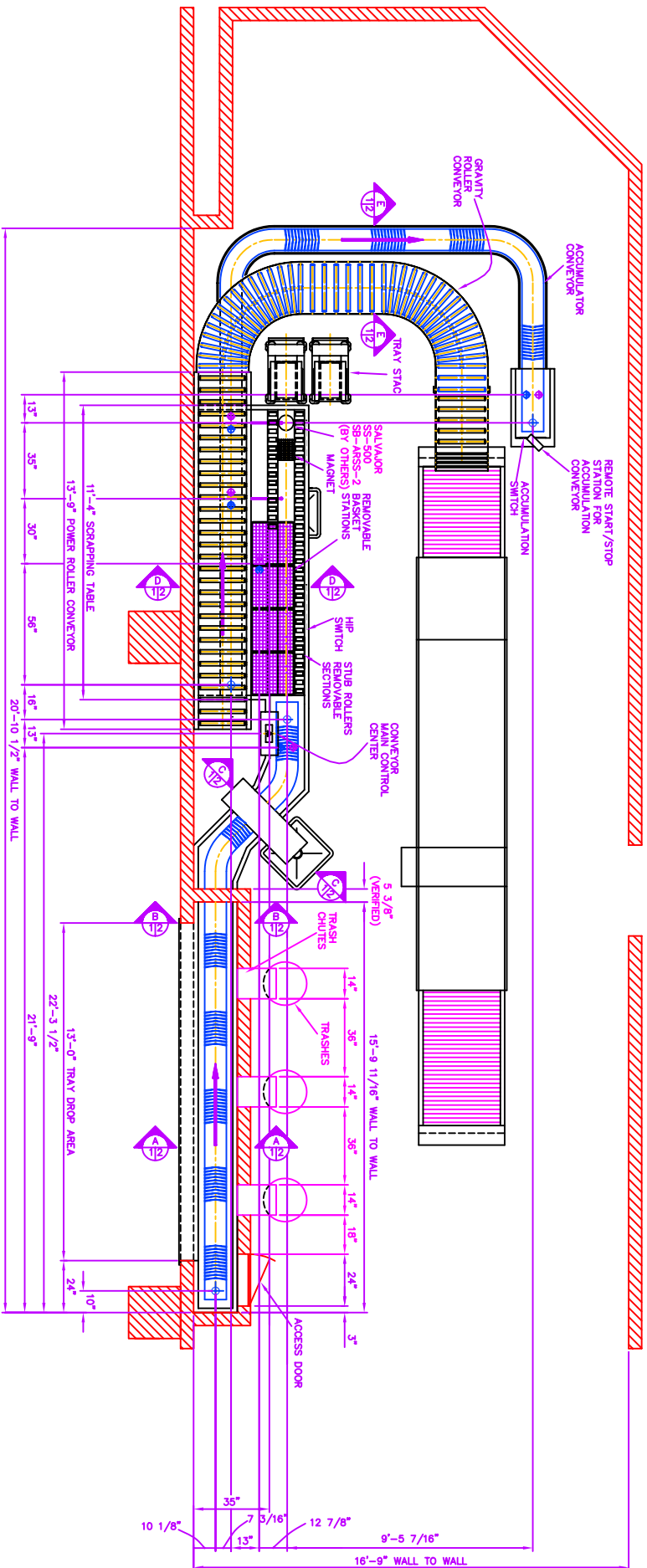
SCALE IN INCHES 0 6 12 18 24 30	
CUSTOMER: AEROWERKS 1150 Eighth Line, Unit #16, Oakville, Ontario L6H 2R4 Tel: (905) 844-9449 Fax: (905) 844-0042	
JOB NAME: BYU - HAWAII	JOB NO.: J017116
TITLE: SOILED TRAY HANDLING SYSTEM	DRAWING NO.: 02
DATE: APR 10, 2002	CHECKED BY: A. CRECH
SCALE: 1"=1'-0"	
DRAWN BY: A. CRECH	

ALL IDEAS, DESIGNS, PLANS AND ARRANGEMENTS INDICATED BY THIS DRAWING ARE THE PROPERTY OF AEROWERKS. NO PART OF THIS DRAWING OR THE INFORMATION CONTAINED HEREIN MAY BE REPRODUCED OR TRANSMITTED IN ANY FORM OR BY ANY MEANS, ELECTRONIC OR MECHANICAL, INCLUDING PHOTOCOPYING, RECORDING, OR BY ANY INFORMATION STORAGE AND RETRIEVAL SYSTEM, WITHOUT THE WRITTEN PERMISSION OF AEROWERKS.



 <p>SCALE IN FT.</p>		<p>ALL LETTERS, FIGURES, PLANS AND MATERIALS SPECIFICATIONS BY THIS DRAWING ARE OWNED BY AEROWERKS AND THE RIGHT OF AEROWERKS AND THE RIGHT OF INVENTION IS RESERVED FOR THE DESIGN OF THE AIRCRAFT. NO PART OF THIS DRAWING OR ANY INFORMATION CONTAINED HEREIN IS TO BE REPRODUCED OR TRANSMITTED IN ANY FORM OR BY ANY MEANS, ELECTRONIC OR MECHANICAL, INCLUDING PHOTOCOPYING, RECORDING, OR BY ANY INFORMATION STORAGE AND RETRIEVAL SYSTEM, WITHOUT PERMISSION OF AEROWERKS.</p>	
CUSTOMER	JOB NAME	REVISION	DATE
<p>1150 Eighth Line, Unit 15, Oakville, Ontario L6H 2R4 Tel: (905) 844-9449 Fax: (905) 844-0042</p>		DESCRIPTION	BY
PURCHASE ORDER NO.	<p>AEROWERKS</p> <p>IONA STATE UNIVERSITY</p> <p>ITEMS # 298, 299, 300, 301, 303, 304</p> <p>CROSS SECTIONS</p>		
DRAWING NO.	DRAWING INC.	CHECKED BY	DATE
J027462	KS/AFANFANS		
02			





LEGEND FOR FINAL MECHANICAL & ELECTRICAL CONNECTIONS

- 1/2" Ø HOT & COLD WATER SUPPLY ~6" A.F.F.
- 1 1/2" Ø DRAIN ~12" A.F.F.
- POWER SUPPLY 15A/208V/3Ø/60Hz (FULL LOAD 5.8A) ~60" A.F.F.

- NOTES:
1. ALL ROUGH-INS TO STUB UP & CAP OFF NO HIGHER THAN 4" A.F.F.
 2. FINAL MECHANICAL CONNECTIONS TO DRAINS AND WATER SUPPLIES BY OTHERS.
 3. FINAL ELECTRICAL CONNECTION TO MAIN CONTROL CENTRE BY OTHERS
 4. FIELD WIRING OF CONVEYORS TO MAIN CONTROL CENTRE BY AEROWERKS @ TIME OF INSTALLATION
 5. CUSTOMER TO PROVIDE SIZES OF ALL TRAYS TO BE USED ON THIS SYSTEM



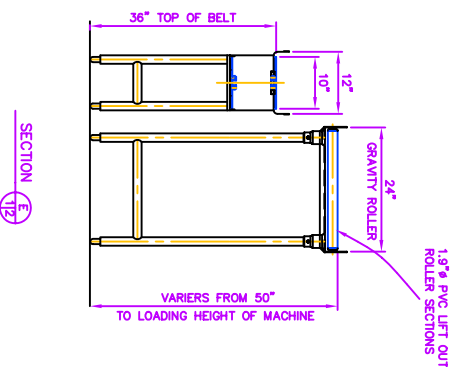
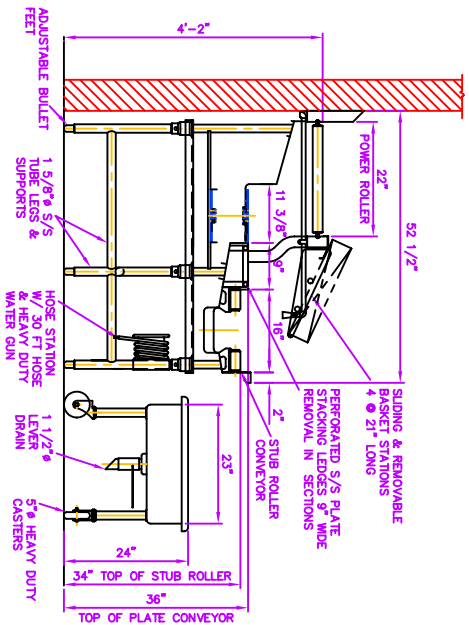
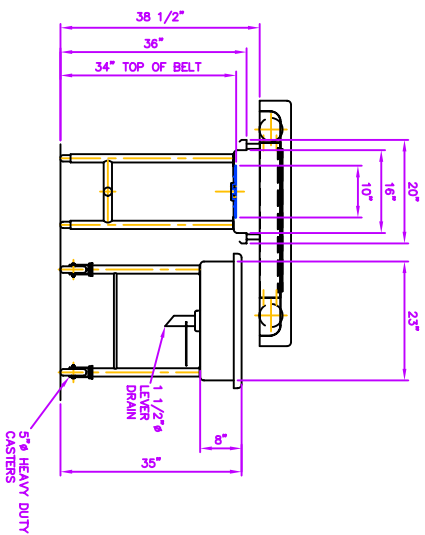
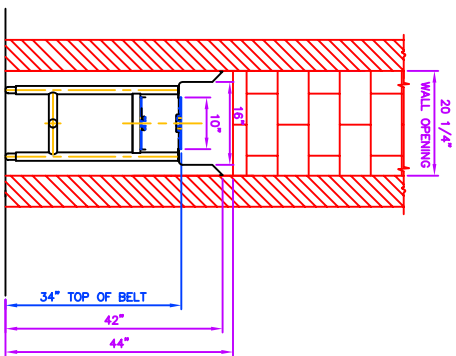
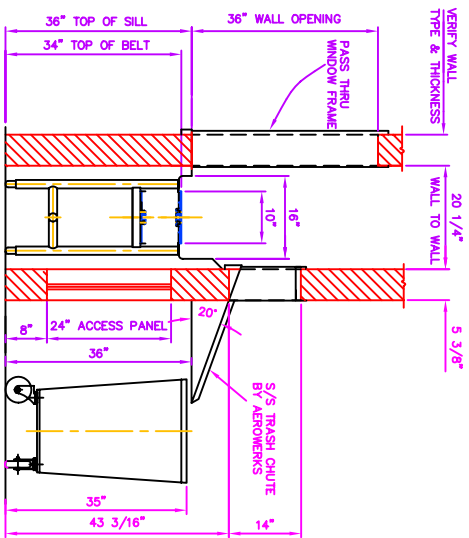
SCALE IN FT.

CUSTOMER		NORTHERN MICHIGAN UNIVERSITY	
JOB NAME:		SOILED TRAY HANDLING SYSTEM	
TITLE		PLAN VIEW	
DATE		OCT. 21, 2000	
SCALE		1/2" = 1'-0"	
DRAWN BY:		K. ESTEVADES	
CHECKED BY:		JOT16837	
		DRAWING NO.	
		OIR	

AEROWERKS

1150 Eighth Line, Unit #16, Oakville, Ontario L6H 2R4
Tel: (905) 844-9449 Fax: (905) 844-0042

REVISION	DATE	DESCRIPTION	BY
1	06/14/2000	DESIGN ON CUSTOMER	TL



0 1 2

SCALE IN FT.

U.L.

NSF.

AEROWERKS

1150 Eighth Line, Unit #16, Oakville, Ontario L6H 2R4
Tel: (905) 844-9449 Fax: (905) 844-0042

CUSTOMER:

JOB NAME: NORTHERN MICHIGAN UNIVERSITY

TITLE: SOILED TRAY HANDLING SYSTEM

CROSS SECTIONS

DATE: OCT. 21, 2000

SCALE: 1" = 12"

DRAWN BY: K. ESTEVAZOS

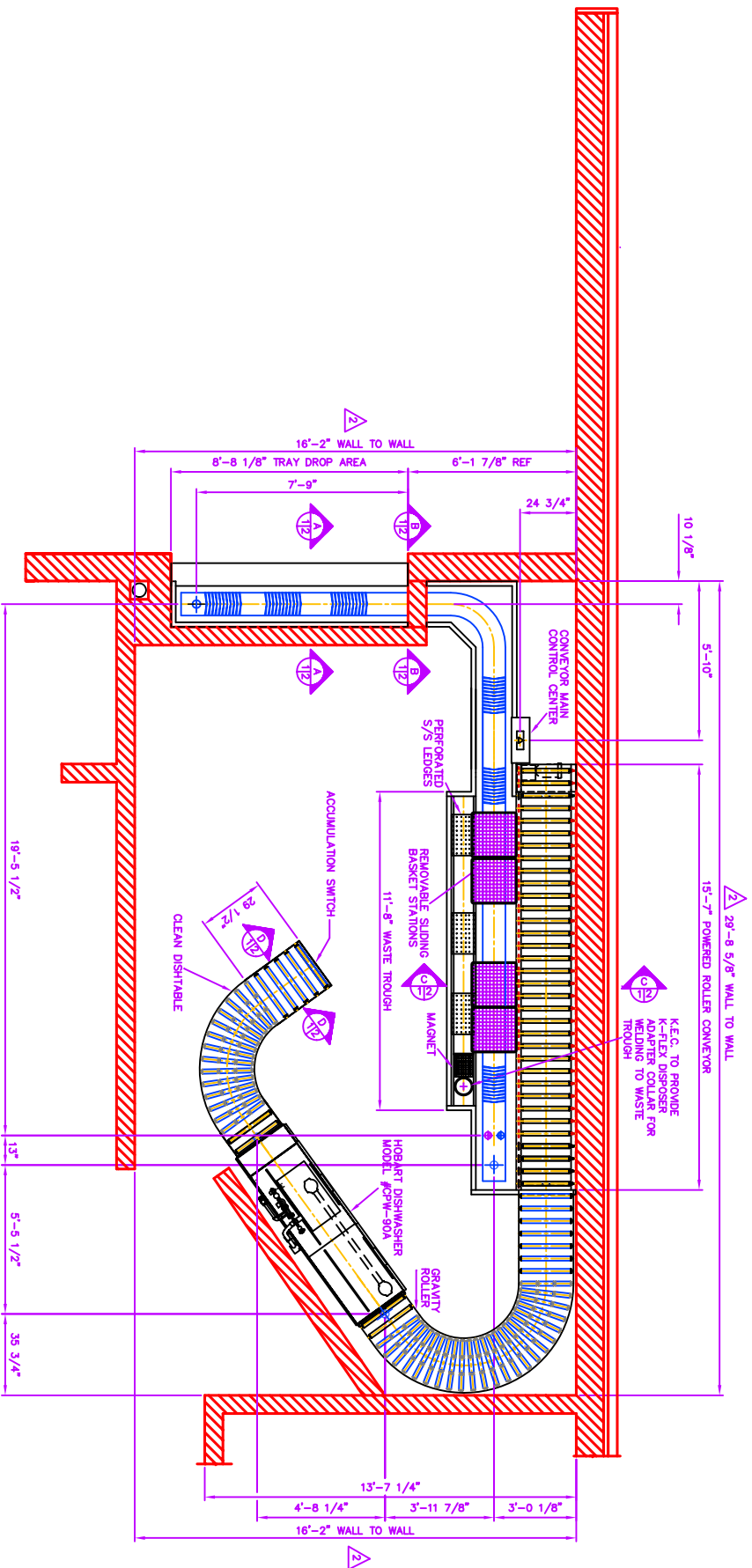
CHECKED BY:

JOB NO: J016837

DRAWING NO: 02R

REGION	DATE	DESCRIPTION	BY	TL
1	05/14/2001	DESIGNED ON CUSTOMER		


ALL IDEAS, DESIGNS, PLANS AND INFORMATION IS PROVIDED BY AND ARE THE PROPERTY OF AEROWERKS. IT IS TO BE USED ONLY FOR THE PROJECT AND NOT BE REPRODUCED OR COPIED IN ANY MANNER WITHOUT THE WRITTEN PERMISSION OF AEROWERKS.



LEGEND FOR FINAL MECHANICAL & ELECTRICAL CONNECTIONS

- 1/2" HOT & COLD WATER SUPPLY ~6" A.F.F.
- 1 1/2" DRAIN ~12" A.F.F.
- POWER SUPPLY 15A/208V/3Ø/60Hz (FULL LOAD 4.7A) ~60" A.F.F.

- NOTES:**
1. ALL TROUGH-INS TO STUB UP & CAP OFF NO HIGHER THAN 4" A.F.F.
 2. FINAL MECHANICAL CONNECTIONS TO DRAINS AND WATER SUPPLIES BY OTHERS.
 3. FINAL ELECTRICAL CONNECTION TO MAIN CONTROL CENTER BY OTHERS
 4. FIELD WIRING OF CONVEYORS TO MAIN CONTROL CENTER BY AEROWERKS @ TIME OF INSTALLATION
 5. CUSTOMER TO PROVIDE SIZES OF ALL TRAYS TO BE USED ON THIS SYSTEM



SCALE IN FT.
0 1 2 3 4 5

3	JUN 10, 02	REVISED AS PER CUSTOMER'S COMMENTS	AC
2	JAN 30, 02	REVISED AS PER CUSTOMER'S COMMENTS	AC
1	JUNE 06, 01	GENERAL REVISION	AC
REVISION	DATE	DESCRIPTION	BY

AEROWERKS
1150 Eighth Line, Unit #16, Oakville, Ontario L6H 2R4
Tel: (905) 844-9449 Fax: (905) 844-0042

CUSTOMER:
NEW BLOXI HIGH SCHOOL
SOILED TRAY HANDLING SYSTEM
PLAN VIEW

JOB NAME:
SOILED TRAY HANDLING SYSTEM

TITLE:
SOILED TRAY HANDLING SYSTEM
PLAN VIEW

DATE:
00/06/14

SCALE:
1/2"=1'-0"

DRAWN BY:
D. CHODURHURY

CHECKED BY:
D. CHODURHURY

JOB NO.:
J016845

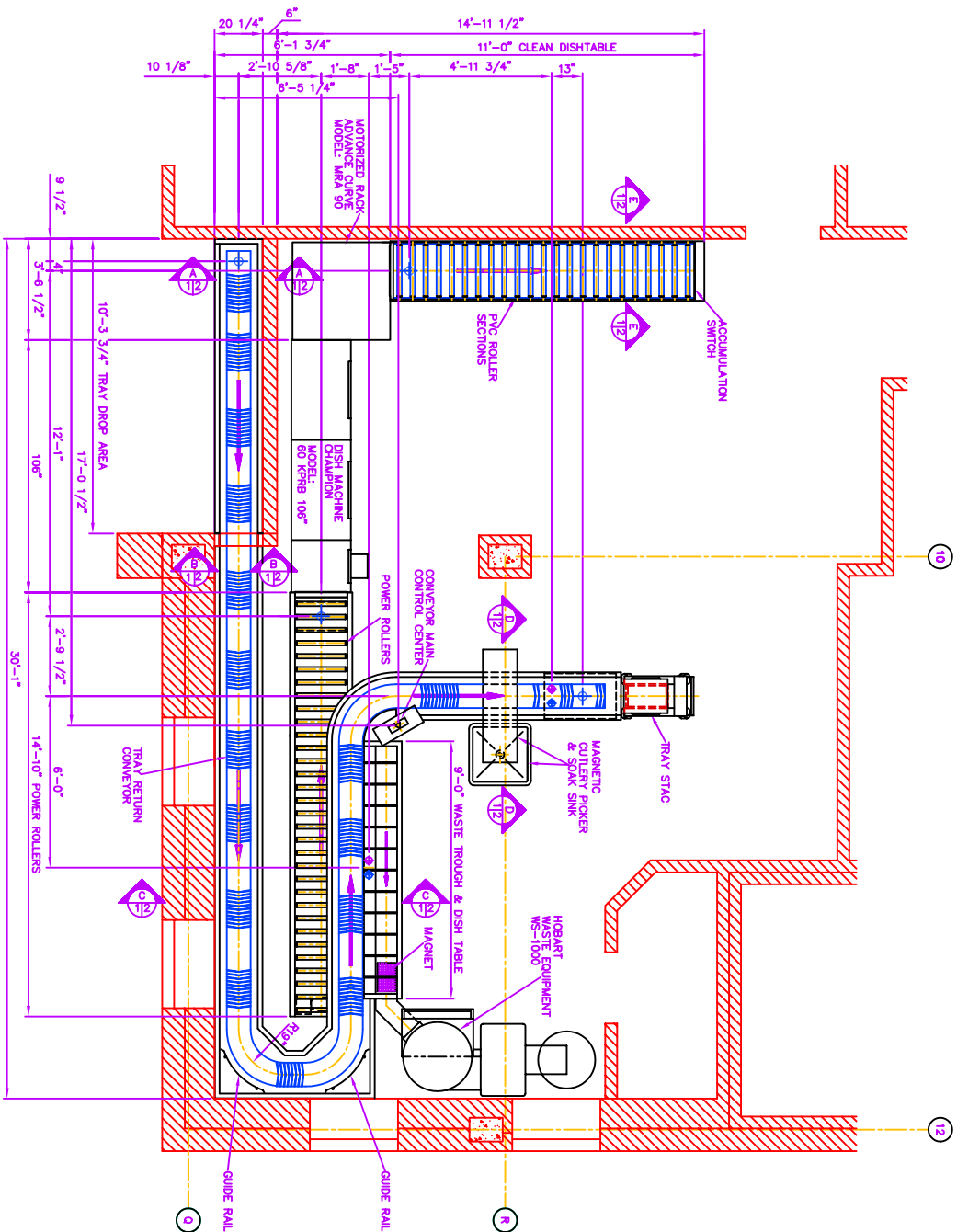
DRAWING NO.:
01



SECTION B



1	DATE CHG. BY	GENERAL REVISION	AC
REVISION	DATE	DESCRIPTION	BY
<p>1150 Eighth Line, Unit #16, Oakville, Ontario L6H 2R4 Tel: (905) 844-9449 Fax: (905) 844-0042</p> <p>AEROWERKS</p>			
CUSTOMER:			
JOB NAME:	NEW BLOK! HIGH SCHOOL		
TITLE:	SOLID TRAY HANDLING SYSTEM		
CROSS SECTIONS			
SCALE:	1"=1'-0"		
DESIGN BY:	D. CHODURNEY		
CHECKED BY:	JOB NO:	DRAWING NO:	
	J016845		02



LEGEND FOR FINAL MECHANICAL & ELECTRICAL CONNECTIONS

- 1/2" Ø HOT & COLD WATER SUPPLY ~6" A.F.F.
- 1 1/2" Ø DRAIN ~12" A.F.F.
- POWER SUPPLY 15A/208V/3ø/60Hz (15A/208V 4L/1N) ~60" A.F.F.

- NOTES:**
1. ALL ROUGH-INS TO STUB UP & CAP OFF NO HIGHER THAN 4" A.F.F.
 2. FINAL MECHANICAL CONNECTIONS TO DRAINS AND WATER SUPPLIES BY OTHERS.
 3. FINAL ELECTRICAL CONNECTION TO MAIN CONTROL CENTRE BY OTHERS.
 4. RECIRCULATING WATER LINE MOUNTED UNDER SOILED DISH TABLE TO PULPER BY OTHERS.
 5. FIELD WIRING OF CONVEYORS TO MAIN CONTROL CENTRE BY AEROWERKS ● TIME OF INSTALLATION
 6. TO BE USED ON THIS SYSTEM



SCALE IN FT.
0 1 2 3 4 5

REVISION	DATE	DESCRIPTION	BY

CUSTOMER:
1150 Eighth Line, Unit #16, Oakville, Ontario L6H 2R4
Tel: (905) 844-9449 Fax: (905) 844-0042

JOB NAME:
SALVE REGINA UNIVERSITY
SOILED TRAY HANDLING SYSTEM

TITLE:
PLAN VIEW

DATE:
DEC. 1, 2000

SCALE:
1/2"=1'-0"

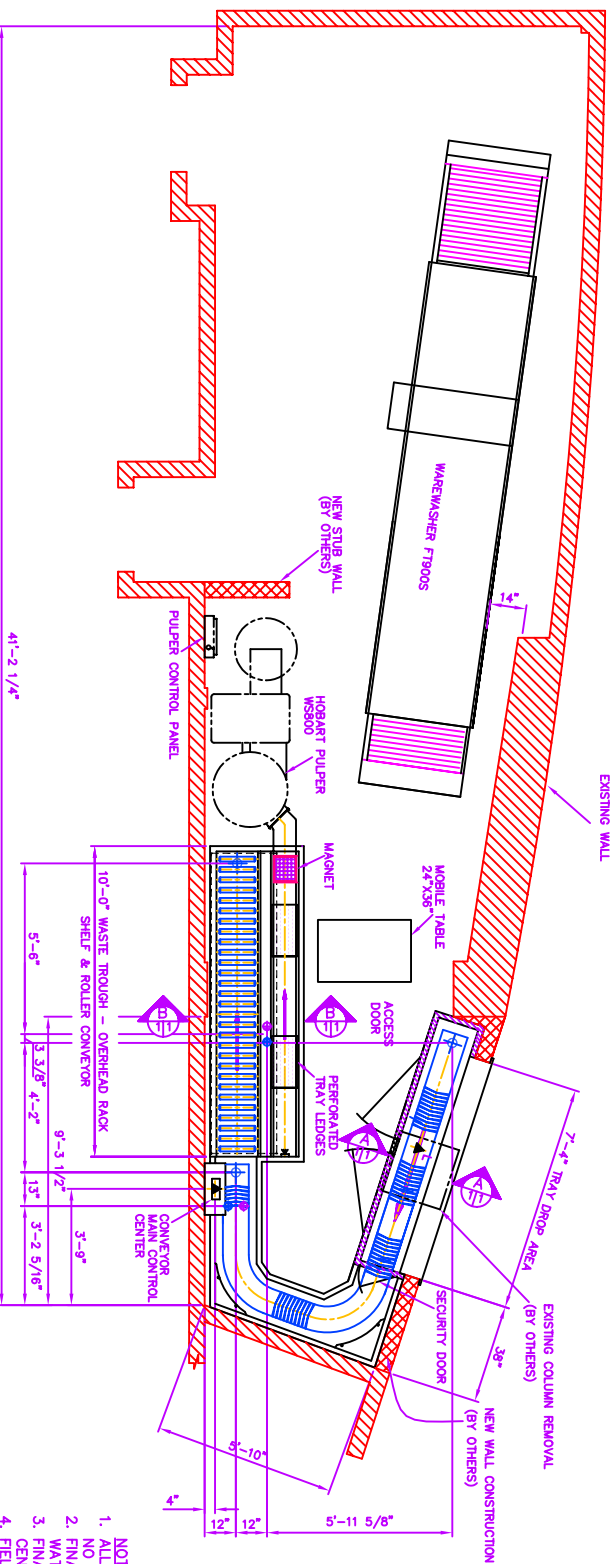
DRAWN BY:
SHEILA SHI

CHECKED BY:

JOB NO.:
J006704

DRAWING NO.:

01

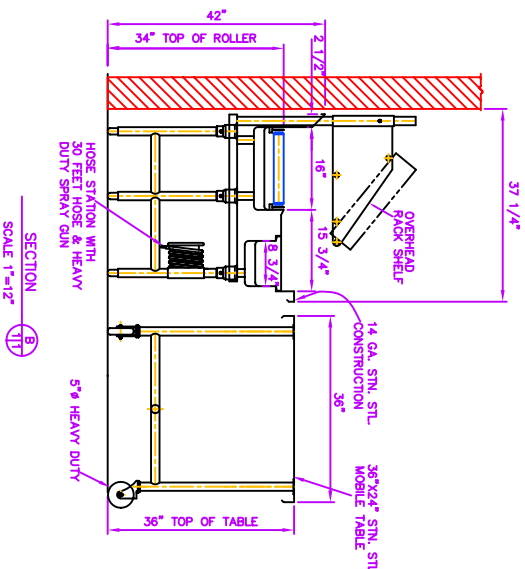
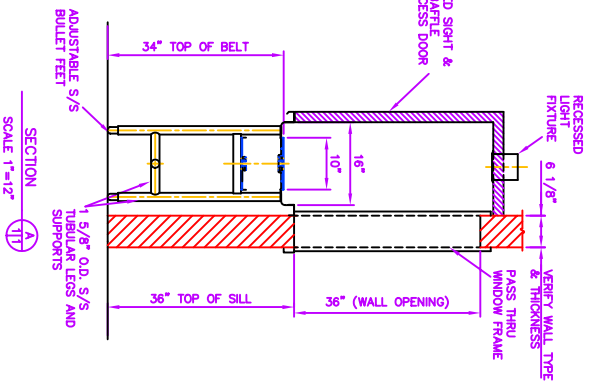


LEGEND FOR FINAL MECHANICAL & ELECTRICAL CONNECTIONS

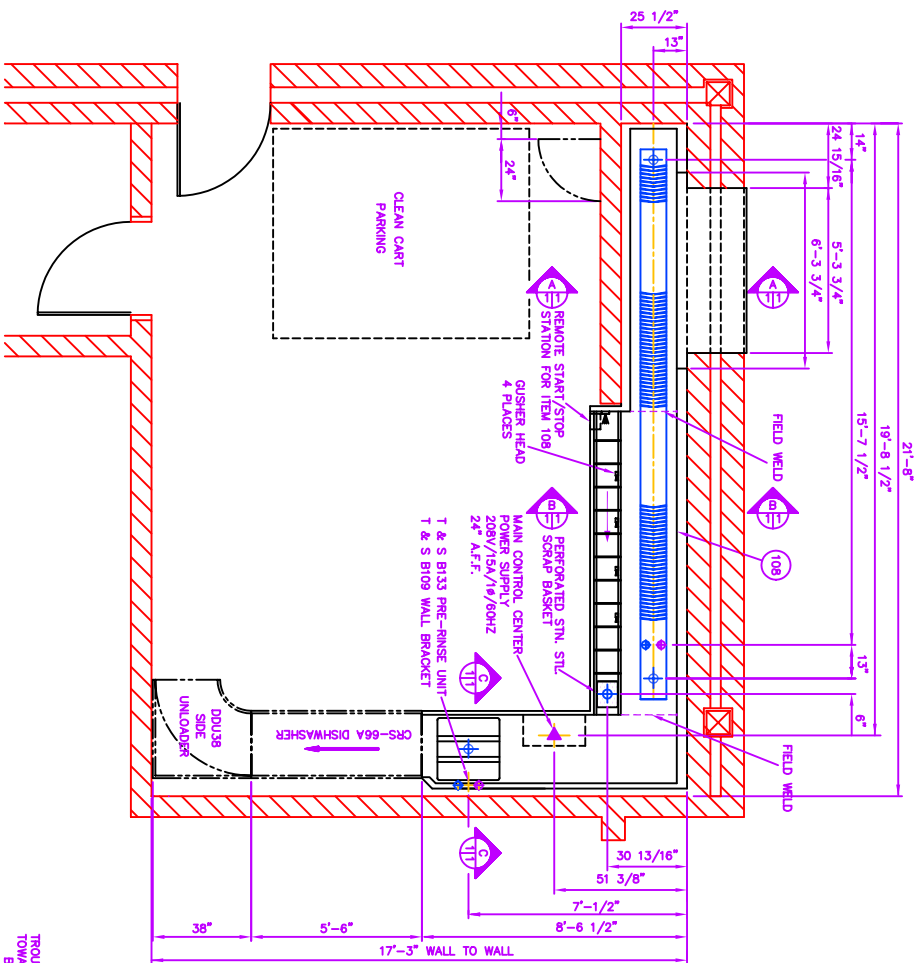
- 1/2" HOT & COLD WATER SUPPLY ~8" A.F.F.
- 1 1/2" DRAIN ~12" A.F.F.
- POWER SUPPLY 15A/208V/1Ø/60Hz (FULL LOAD 3.3A) ~60" A.F.F.
- LIGHT FIXTURE POWER SUPPLY 120V/15A/1Ø/60Hz (FULL LOAD 2A) ~84" A.F.F.
- LIGHT SWITCH LOCATION BY E.C.

- NOTES:**
1. ALL ROUGH-INS TO STUB UP & CAP OFF NO HIGHER THAN 4" A.F.F.
 2. FINAL MECHANICAL CONNECTIONS TO DRAINS AND WATER SUPPLIES BY OTHERS.
 3. FINAL ELECTRICAL CONNECTION TO MAIN CONTROL CENTRE BY OTHERS
 4. FIELD WIRING OF CONVEYOR TO MAIN CONTROL CENTRE BY AEROWERKS @ TIME OF INSTALLATION
 5. CUSTOMER TO PROVIDE SIZES OF ALL TRAYS TO BE USED ON THIS SYSTEM

CUSTOMER TO PROVIDE AEROWERKS ALL FIELD VERIFIED DIMENSIONS FOR EQUIPMENT ENGINEERING & FABRICATION



		SCALE IN FT. 0 1 2 3 4 5	
REVISION	DATE	GENERAL REVISION	BY
1	NOV. 21, 00		K.E.
CUSTOMER: GLOBE EQUIPMENT COMPANY JOB NAME: QUINNIPAC COLLEGE TITLE: SOILED TRAY HANDLING SYSTEM PLAN VIEW & CROSS SECTIONS DATE: OCT. 12, 00 SCALE: 1/2" = 1'-0" & NOTED DRAWN BY: K. ESTAFANOS CHECKED BY:			
1150 Eighth Line, Unit #16, Oakville, Ontario L6H 2R4 Tel: (905) 844-9449 Fax: (905) 844-0042 AEROWERKS			JOB NO: J006676 DRAWING NO: 01



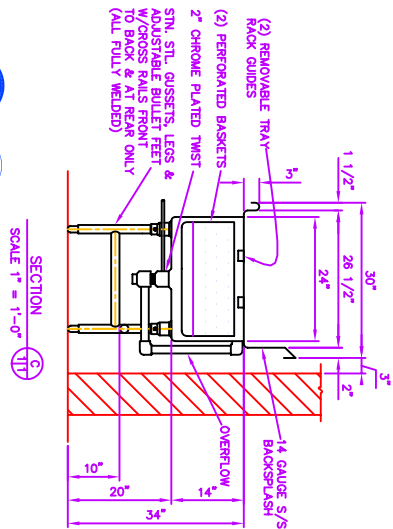
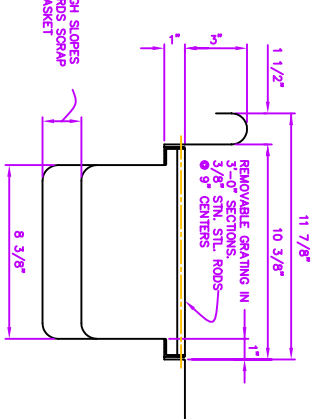
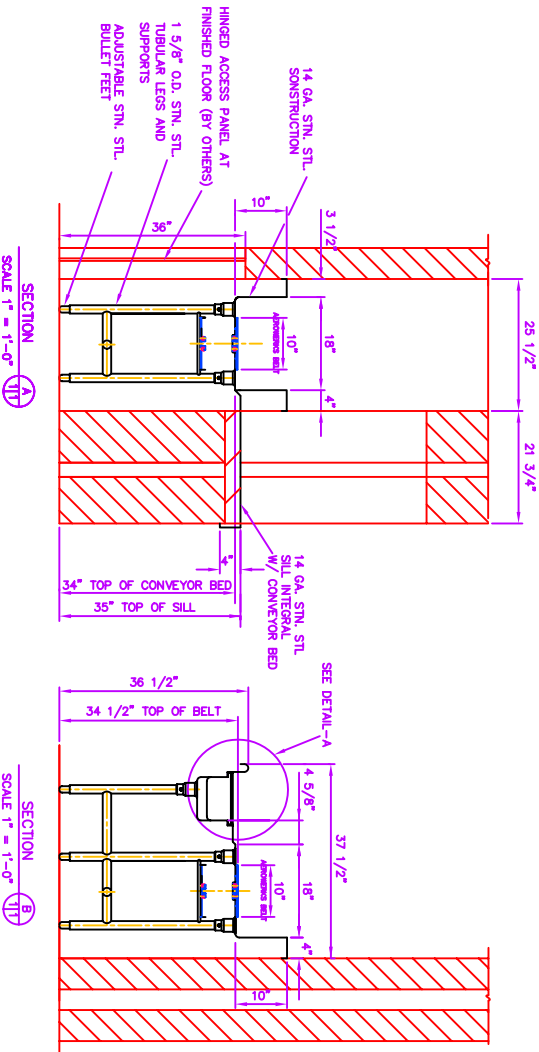
- NOTES:
1. ALL ROUGH-INS TO STUB UP & CAP OFF NO HIGHER THAN 4" A.F.F.
 2. FINAL MECHANICAL CONNECTIONS TO DRAINS AND WATER MECHANICALS BY OTHERS.
 3. FINAL ELECTRICAL CONNECTION TO MAIN CONTROL CENTRE BY OTHERS
 4. FIELD WIRING OF CONVEYOR TO MAIN CONTROL CENTRE BY AEROWERKS @ TIME OF INSTALLATION
 5. CUSTOMER TO PROVIDE SIZES OF ALL TRAYS TO BE USED ON THIS SYSTEM

LEGEND FOR ROUGH-INS

1/2" Ø HOT & COLD WATER SUPPLY ~6" A.F.F.

1 1/2" Ø DRAIN ~12" A.F.F.

POWER SUPPLY 15A/208V/1Ø/60HZ (ACTUAL LOAD 2.8A) ~24" A.F.F.



SCALE IN FT.

0 1 2 3 4 5

REVISION	DATE	BY	DESCRIPTION
1	MAR. 6/99		REVISED AS PER CUSTOMER'S NOTES

CUSTOMER:	WAREHOUSE STORE FIXTURE	PURCHASE ORDER NO:
JOB NAME:	ANSONIA HIGH SCHOOL-ANSONIA, CT	
TITLE:	ITEM 108 SOILED DISHTABLE WITH CONVEYOR & PRE-RINSE SINK	
DATE:	FEB. 18, 1998	
SCALE:	1/2" = 12" & NOTED	
DRAWN BY:	LEHMANBRYA	JOB NO: J985592
CHECKED BY:		DRAWING NO: 01

AEROWERKS

1150 Eighth Line, Unit 16, Oakville, Ontario L4H 2K4
Tel: (905) 844-9449 Fax: (905) 844-0042